

30 1  
Inspection Report For Flood Damage Work

Date:

1. Name of PIUs: R.W.D, Works division, Gopalganj-2
2. Name of Block/Road: Barauli / Salong to Baterdeh.

**A For Road**

1. Damage Location/ Chainage : 468, 622, 716, 839, 940, 3240
2. Damage Length : 282.60 M
3. Nature of Damage : Flood Damage
4. Details of Restoration Works :
  - i. Material being used in Restoration Works : Soil & Brick Bats
  - ii. Equipments / Tools being used in Restoration Works : Tractor, JCB, Labour etc
  - iii. Procedure taken up in Restoration Works : As per S.O.P
  - iv. Restored Length : 282.60 M

**B For Bridge**

1. Damage Location / Chainage : N.A
2. Damage Length : N.A
3. Nature of Damage : N.A
4. Details of Restoration Works : N.A
  - i. Material being used in Restoration Works : N.A
  - ii. Equipments / Tools being used in Restoration Works : N.A
  - iii. Procedure taken up in Restoration Works :
  - iv. Restored Length :

*Sanjit Singh*  
10/11/20  
JE

AE

*10/11/20*  
EE

*14/11/21*  
Signature  
Executive Engineer  
(Name of Engineer)  
R.W.D. W.D.  
Hathua



# ग्रामीण कार्य विभाग

Rural Works Department, Govt of Bihar

## FLOOD DAMAGED REPAIR (FDR) DETAILED ESTIMATE

DISTRICT :- GOPALGANJ  
BLOCK :- BARAULI

MOTORABLE WORK OF SALONA TO  
BATERDEH

ESTIMATED COST	Rs.- 3115300.00
----------------	-----------------

SUBMITTED BY:  
EXECUTIVE ENGINEER,  
RWD WORKS DIVISION,  
GOPALGANJ-2

## REPORT

NAME OF WORK :- MOTORABLE WORK OF SALONA TO BATERDEH

ESTIMATED COST (Rs.) :- 3115300.00 DISTRICT :- GOPALGANJ

BLOCK :- BARAULI DIVISION :- GOPALGANJ-2

The Present estimate has been framed under the supervision of Assistant Engineer in accordance with the order of Executive Engineer, RWD, Works Division Gopalganj-2, letter no.- 1574 dated 18-08-2020. The part of above mentioned road has been damaged due to heavy rain/flood and due to this damaged the transportation has been obstructed. The immediate motorable work is necessary in public interest. Villagers will be benefitted by the completion of this motorable work.

In the estimate there has been a provision of repairing the damaged part of the road & making it motorable by filling Earth and Brickbats.

In this estimate the rate of raw materials and labour wages has been prepared after the analysis of new rate. This Estimate is as per the specification. The estimate is devoted to technical and administrative acceptance.

*Sawit Singh*  
10/11/2020

Junior Engineer

Assistant Engineer

*[Signature]*  
10/11/20

Executive Engineer,

## GENERAL ABSTRACT OF COST

### MOTORABLE WORK OF SALONA TO BATERDEH

DISTRICT - GOPALGANJ

DIVISION - GOPALGANJ-2

BLOCK - BARAULI

SL. No.	Item of Work	Amount (Rs.)
1	EARTH WORK :	Rs.- 148930.00
2	BRICK BATS :	Rs.- 2966370.00
3	SAND BAGS :	Rs.- 0.00
4	HUME PIPE :	Rs.- 0.00
	<b>COST OF RESTORATION</b> :	<b>Rs.- 3115300.00</b>

Rs. 3164853.20  
1. Conty - 3164920  
Rs. 3196502.20  
Rs. 31.965 Lacs

*Savit Singh.*  
10/11/2020

Junior Engineer

Asstt. Engineer

*10/11/20*

Executive Engineer

Technically Approved for Rs 31.965 Lacs (Rupees Thirty one Lacs Ninety six Thousand & Five Hundred) only

*21/01/21*  
Superintending Engineer  
RWD Works Circle, Siwan  
*R. K. Singh*  
21/01/21



## DETAILED ESTIMATE

me of Work:- **MOTORABLE WORK OF SALONA TO BATERDEH**

FDR

DISTRICT - GOPALGANJ

< - BARAULI

DIVISION - GOPALGANJ-2

Name of Item	unit	No	Length	Width	Height	Qty.	Rate	Amount
EARTH WORK - Construction of embankment with approved material obtained from borrow pits with a lift upto 1.5 m, transporting to site, spreading, grading to required slope and compacting to meet requirement of Tables 300.1 and 300.2 with a lead upto 1000 m as per Technical Specification Clause 301.5	cum					1009.9	215.34 147.47	217472 148930.00
Providing and Labour for laying dry graded Brick Bats including light ramming etc. all complete as per approved design, specification and direction of E/I.	cum					1221.910	2412.11 2427.65	2947381 2966370.00
Providing, Filling Sand Bag, Stitching and Placing etc. all complete as per specification and direction of E/I.	Nos.					0.000	29.74 31.04	0.00
Providing and laying 1000 mm dia reinforced cement concrete pipe NP3 for culvert on first class bedding of granular material in single row excluding excavation, protection works, backfilling, concrete and masonry.	RM					0.000	2744.50 3919.77	0.00
Providing and laying 600 mm dia reinforced cement concrete pipe NP3 for culvert on first class bedding of granular material in single row excluding excavation, protection works, backfilling, concrete and masonry.	RM					0.000	2058.38 2257.91	0.00
TOTAL (in Re.)							3115300.00	

*Savit Singh*  
10/11/2020  
Junior Engineer

Assistant Engineer

*10/11/20*  
Executive Engineer,

31648532  
1. Contingent Rs. 3164920  
3196502  
Sum Rs. 31.9656

Name of Work:-

# MOTORABLE WORK OF SALONA TO BATERDEH

## Appendix - II

Appendix - II									
Measurement for surfacing the Breach with Brick Bats									
Sl. No.	From Chainage	To Chainage	Nos	Length (M)	width (M)	Av. Width (M)	Thickness (M)	Quantity (cum)	
1	CH:- 468.80 M	CH:- 481.10 M	1	12.30	(4.1+3.4)/2 =	3.750 Av.	1.20 Av.	55.35	
2	CH:- 622.00 M	CH:- 647.40 M	1	25.40	(4.05+3.5)/2 =	3.775 Av.	1.60 Av.	153.42	
3	CH:- 716.20 M	CH:- 754.10 M	1	37.90	(4+3.4)/2 =	3.700 Av.	1.90 Av.	266.44	
4	CH:- 839.70 M	CH:- 881.90 M	1	42.20	(4.1+3.6)/2 =	3.850 Av.	2.10 Av.	341.19	
5	CH:- 940.00 M	CH:- 979.80 M	1	39.80	(4+3.5)/2 =	3.750 Av.	2.10 Av.	313.43	
6	CH:- 3240.00 M	CH:- 3365.00 M	1	125.00	(3.3+3.5)/2 =	3.400 Av.	0.217 Av.	92.08	
				Total					1221.91
Deduction for 0Nos 1000 mm HP at 0 m (3.142*0.36*0)									0.00
Deduction for 0Nos 600 mm HP at 0 m (3.142*0.22*0)									0.00
Net Quantity of Brick Bats									1221.91

*Domit Hingir*  
10/11/20

Junior Engineer

Asistant Engineer

*22/11/20*  
20/11/20

Executive Engineer



Name of Work:-

MOTORABLE WORK OF SALONA TO BATERDEH

Appendix - I

Measurement for surfacing the Breach with EARTH WORK							
Sl. No.	From Chainage	To Chainage	Nos	Length (M)	width (M)	Thickness (M)	Quantity (cum)
1	CH:- 468.80 M	CH:- 481.10 M	2	12.30	$(1.95+1.315)/2 =$	1.50 Av.	60.26
2	CH:- 622.00 M	CH:- 647.40 M	2	25.40	$(1.95+1.315)/2 =$	1.80 Av.	149.32
3	CH:- 716.20 M	CH:- 754.10 M	2	37.90	$(1.915+1.31)/2 =$	2.00 Av.	244.53
4	CH:- 839.70 M	CH:- 881.90 M	2	42.20	$(1.875+1.225)/2 =$	2.10 Av.	274.72
5	CH:- 940.00 M	CH:- 979.80 M	2	39.80	$(1.895+1.315)/2 =$	2.20 Av.	281.07
					Total		1009.90
	Deduction for ONos 1000 mm HP at 0 m (3.142*0.36*0)						0.00
	Deduction for ONos 600 mm HP at 0 m (3.142*0.22*0)						0.00
	Net Quantity of Earth Work -						1009.90

*Sumit Singh*  
10/11/2020  
Junior Engineer

Assistant Engineer

*22/01/2020*  
Executive Engineer

1.1 RCD	Loading and Unloading of Stone Boulder/ Stone aggregates/Brick Bats/Jhama Metal/Sand /Kanker/Moorum			
	Placing Tractor at loading point, loading with frontloader, dumping, turning for return trip, excluding for haulage and return trip			
	Unit = cum			
	Taking output = 2.25 cum			
	Time required for			
	i) Positioning of Tractor at loading point		1 Min	
	ii) Loading by front end loader 1 cum bucket capacity @ 25 cum per hour		5 Min	
	iii) Maneuvering, reversing, dumping and turning for return		0 Min	
	iv) Waiting time, unforeseen contingencies etc		0 Min	
	Total		6 Min	
	a) Labour			
	Mate	day	0.03	305.00
	Mazdoor for loading and unloading	day	0.72	287.00
	b) Machinery			
	Tractor 3.60 tonnes capacity	hour	0.1	549.10
	Front end-loader 1 cum bucket capacity @ 25 cum/hour	hour	0.083	1403.00
	c) Overhead charges @ 0.06 on (a+b)			23.23
	Cost for 2.25 cum = a+b+c+d			410.38
	Rate per cum = (a+b+c+d)/ 2.25			182.39
Note:-	Unloading will be done manually.			
1.	Supplying for Brick Bats (with OH )			
A.	Basic Rate of Brick Bats	Per Cum	1017.00	1017.00
	Add overhed Charges	6%		61.02
	Total -			1078.02
	Surface Lead	KM	7	
	Unsurface Lead	KM	1	
	Factor (3.6/2.25)	Cum	1.60	
B.	Carriage (with OH )			
	(1.6 x 7 x 17.25) + (1.6 x 1 x 21.55) + 182.39			410.07
C.	Cost of Labour for Pitching and Light Ramming as per WRD SOR 6.6.1 (with			383.15
	Total (A+B+C) (with 10% C.P.) -			2058.36
	Add 1% Labour Cess (A+B+C)			20.58
	Add 12% GST (A+B+C)			247.00
	Add 10% cost of Material for Seigniorage Fee	1	101.70	101.70
	Total Cost per Cum		Rs.-	2427.65



# BRICK BATS PITCHING MANUAL MEANS

6.6.1 WRD Bihar	Labour for laying dry graded Jhama Khoa or stone filter under Brick Pitching or Boulder Pitching in slope or apron including light ramming etc. all complete as per approved design, specification and direction of E/I.				
	Unit :- Per Cum				
	Taking Output = 2.832 Cum				
	Unskilled Mazdoor	Nos.	3	287.00	861.00
	Add 6% Overhead Charges				51.66
	Rate for 2.832 Cum				912.66
	Rate per Cum (Rs.) -				383.15
I.4 RCD	Cost of Haulage Excluding Loading and Unloading				
	Haulage of materials by Tractor excluding cost of loading, unloading and stacking.				
	Unit = t.km				
	Taking output 3.60 tonnes load and lead 10 km =	36.0 t.km			
	(i) Surfaced Road				
	Speed with load : 15 km / hour.				
	Speed while Returning empty :25 km / hour.				
	a) Machinery.				
	Tractor 3.6 tonne capacity				
	Time taken for onward haulage with lo	hour	0.667	549.10	366.25
	Time taken for empty return trip.	hour	0.400	549.10	219.64
	b) Overhead charges @ 0.06 on (a)				35.15
	cost for 36 t km = a+b+c				621.04
	Rate per t.km = (a+b+c)/36				17.25
	Say Rs. -				17.25
	(ii) Unsurfaced Graveled Road				
	Speed with load: 12 km / hour				
	Speed for empty return trip :20 km / hour				
	a) Machinery				
	Tractor 3.6 tonnes capacity				
	Time taken for onward haulage with lo	hour	0.833	549.10	457.40
	Time taken for empty return trip hour	hour	0.500	549.10	274.55
	b) Overhead charges @ 0.06 on (a)				43.92
	Cost for 36 t .km = a+b+c				775.87
	Rate per t.Km = (a+b+c)/36				21.55
	Say Rs. -				21.55

## Chapter 3

### EARTHWORK

Sr. No.	Reference to MORD Specifications	Description	Unit	Quantity	Rate (Rs.)	Amount (Rs.)
3.4	301.5	Construction of Embankment with Material Obtained from Borrow Pits				
		Construction of embankment with approved material obtained from borrow pits with a lift upto 1.5 m, transporting to site, spreading, grading to required slope and compacting to meet requirement of Tables 300.1 and 300.2 with a lead upto 1000 m as per Technical Specification Clause 301.5				
		Unit = cum				
		Taking output = 100 cum				
		a) Labour				
		Mate	day	0.04	305.00	12.20
		Mazdoor (Unskilled)	day	1.00	287.00	287.00
		b) Machinery				
		Hydraulic Excavator 0.90 cum bucket capacity @ 60 cum per	hour	1.67	1,969.20	3,288.56
		Tipper 5.5 cum with 10 t capacity	hour	4.50	1,043.00	4,693.50
		Dozer D-50 for spreading @ 100 cum per hour	hour	0.00	3,337.90	0.00
		Tractor Mounted Grader for grading @ 200 cum per hour	hour	1.00	549.10	549.10
		Water tanker 6 kl capacity	hour	0.00	184.00	0.00
		Three wheel 80-100 kN Static Roller @ 80 cum per hour	hour	0.00	803.00	0.00
		c) Material				
		Water	kl	0.00	40.00	0.00
		Compensation for earth taken from private land	cum	100.00	34.81	3,481.00
		d) Overheads @ 6.0% on (a+b+c)				738.68
		Cost for 100 cum = a+b+c+d+e				13,050.04
		Rate per cum = (a+b+c+d+e)/100				130.50
		Add 1% Labour Cess				1.31
		Add 12% GST				15.66
		Final Rate in DPR				147.47

Sawit Singh.  
 10/11/2022  
 J.E



**प्रधानमंत्री ग्राम सड़क योजना**

सड़क - सलीता से बतरदेह  
 लम्बाई - 4.708 कि. मी. अतः लागत - 273.95 लाख रु.  
 5 वर्ष तक समान्य अवरुद्धता की लागत - 850 लाख रु.  
 जारी आरम्भ 13/02/2010 पूर्ण 12/08/2011

अवरुद्धता - मेसर्स वैभव कन्स्ट्रक्शन्स प्रा. लि. रोडर्स वर्कर्स, सं.-5 रोपानगंज  
 निष्पादक द्वारा कार्यपालक अभियन्ता ग्रामीण कार्य विभाग कार्य प्रमाण मेसर्स वैभव कन्स्ट्रक्शन्स प्रा. लि.  
 ग्राम विकास मंत्रालय, भारत सरकार द्वारा वित्त पोषित परियोजना

**प्रधानमंत्री**



*Jawit Ding.*  
10/11/2020  
J.E

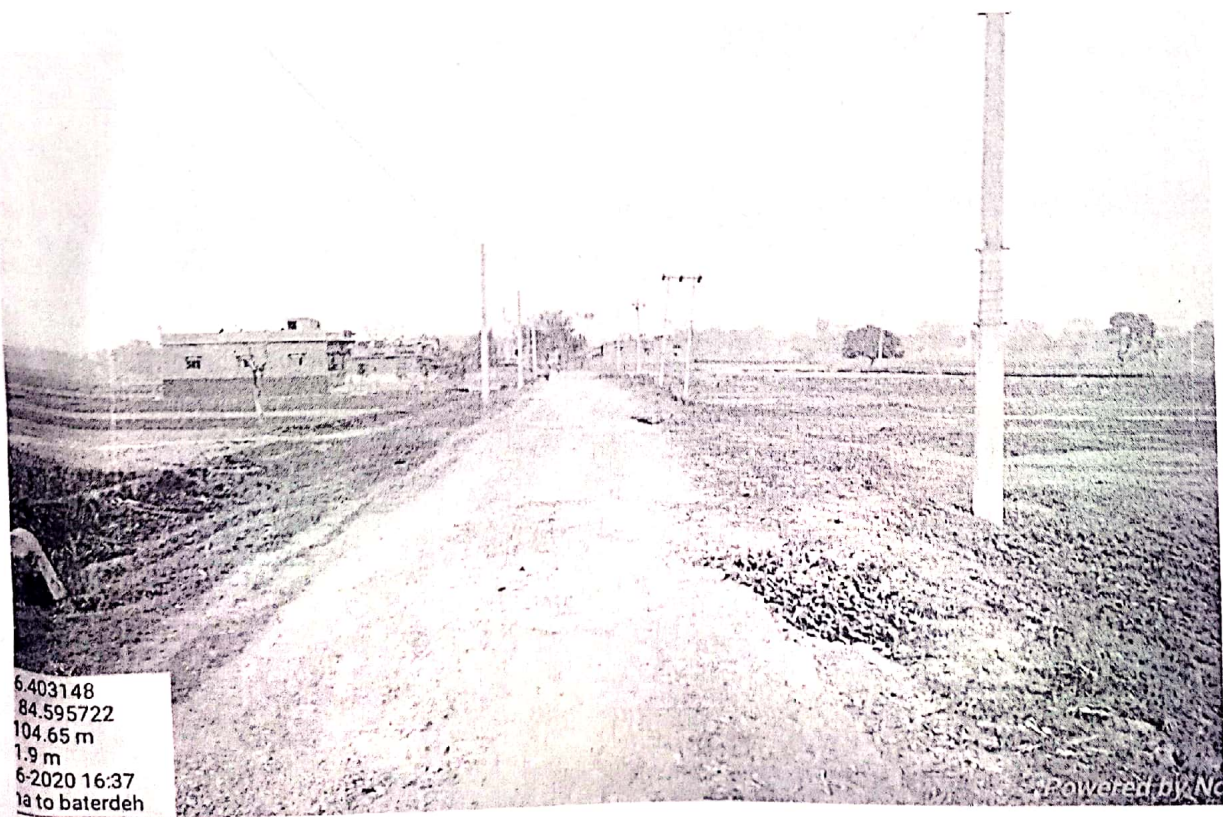
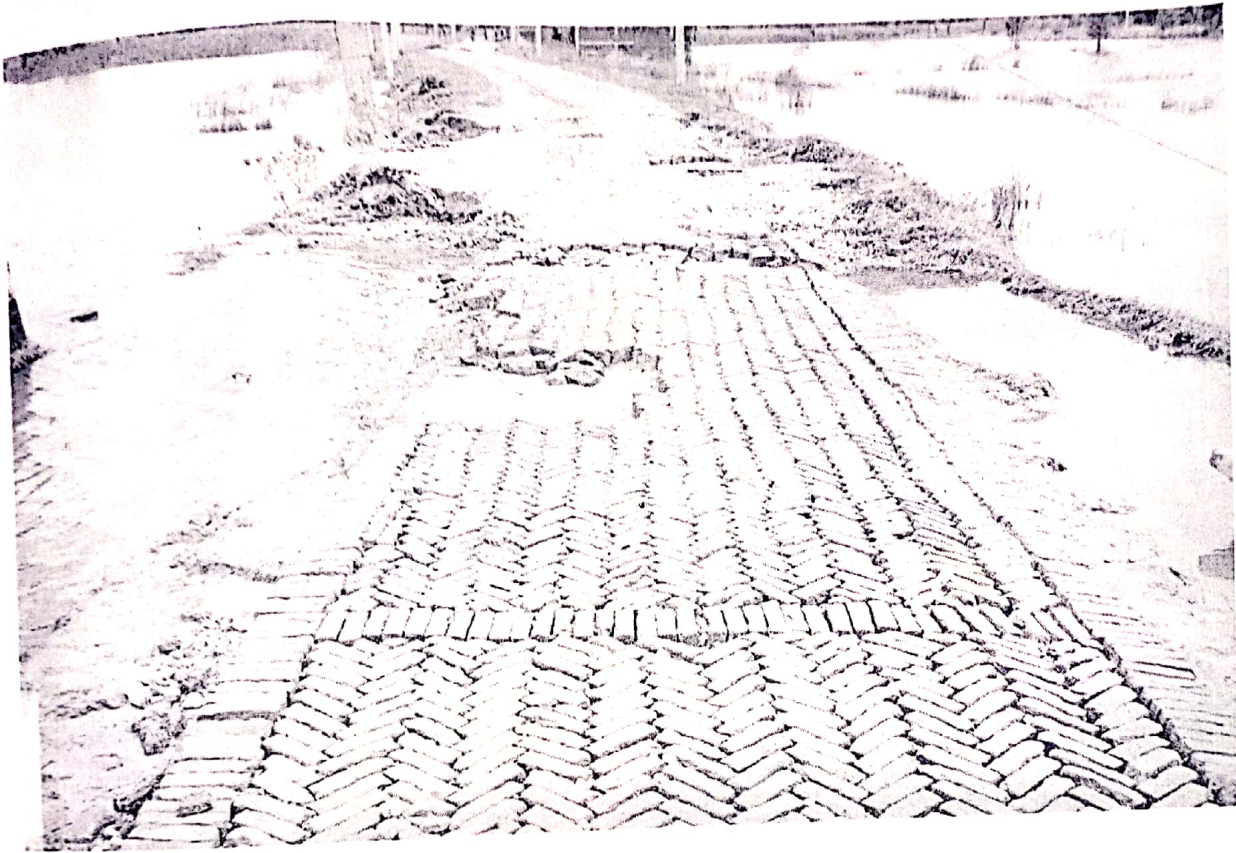


# SALONA TO BATERDEH





# SALONA TO BATERDEH

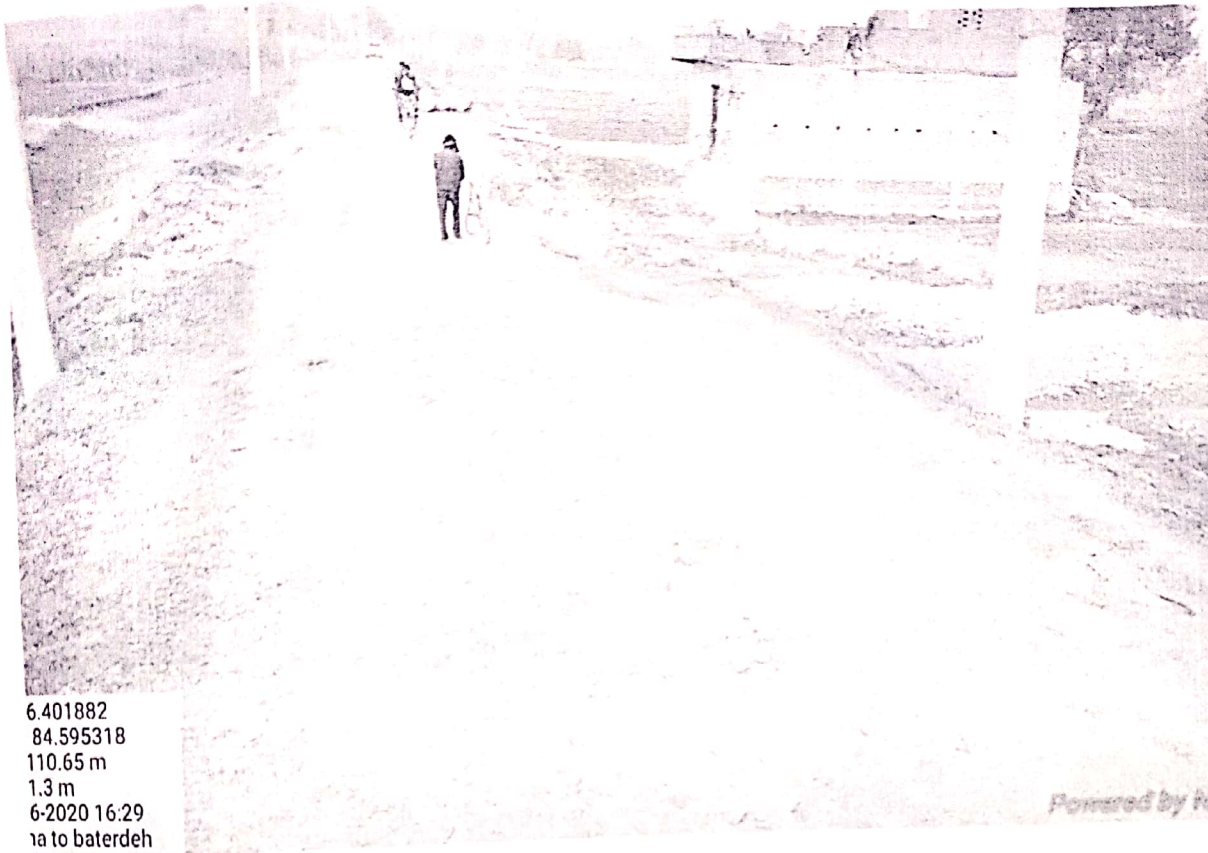


6.403148  
84.595722  
104.65 m  
1.9 m  
6-2020 16:37  
a to baterdeh

Powered by No



# SALONA TO BATERDEH





① Measurement for Surfacing the Beach with Earth work			
all complete jobs.			
CH-468.80 to 481.10m	- 2X12.30X	$\frac{1.95+1.315}{2}$	$\times 1.50 = 60.26 m^3$
CH-622 to 647.40m	- 2X25.50X	$\frac{1.95+1.315}{2}$	$\times 1.80 = 149.32 m^3$
CH-716.20 to 754.10m	- 2X38.60X	$\frac{1.90+1.31}{2}$	$\times 2.10 = 244.53 m^3$
CH-839.70 to 881.90	- 2X42.20X	$\frac{1.875+1.225}{2}$	$\times 2.10 = 274.72 m^3$
CH-940 to 979.80	- 2X39.60X	$\frac{1.895+1.31}{2}$	$\times 2.10 = 281.07 m^3$
			<u>1009.90 m<sup>3</sup></u>
② Providing/Laying surfacing the Beach with Brick Bats.			
all complete jobs - do - do -			
CH-468.80 to 481.10m	- 12.30X	$\frac{4.17+3.9}{2}$	$\times 1.20 = 55.35 m^3$
CH-622 to 647.40	- 25.40X	$\frac{4.05+3.5}{2}$	$\times 1.60 = 153.42 m^3$

Continuation

Particulars	Details of actual measurement				Contents of area
	No.	L.	B.	D.	
CH- 716.20 M to 754.10 M.					
	1	37.90	$\frac{4.00+3.40}{2}$	$\times 1.60$	266.44 m <sup>3</sup>
CH- 839.70 M to 881.90 M.					
	1	42.20	$\frac{4.05+3.6}{2}$	$\times 2.10$	341.19 m <sup>3</sup>
CH- 940.00 M to 979.80 M.					
	1	39.80	$\frac{4.05+3.5}{2}$	$\times 2.10$	313.43 m <sup>3</sup>
CH- 3240.00 M to 3365.00 M					
	4	30.00	$\frac{3.5+3.3}{2}$	$\times 0.20$	81.60 m <sup>3</sup>
	1	7.00	$\frac{3.5+3.3}{2}$	$\times 0.25$	5.95 m <sup>3</sup>
					1217.38 m <sup>3</sup>

Sanjit Singh.  
24/01/2020  
J.E

Continuation